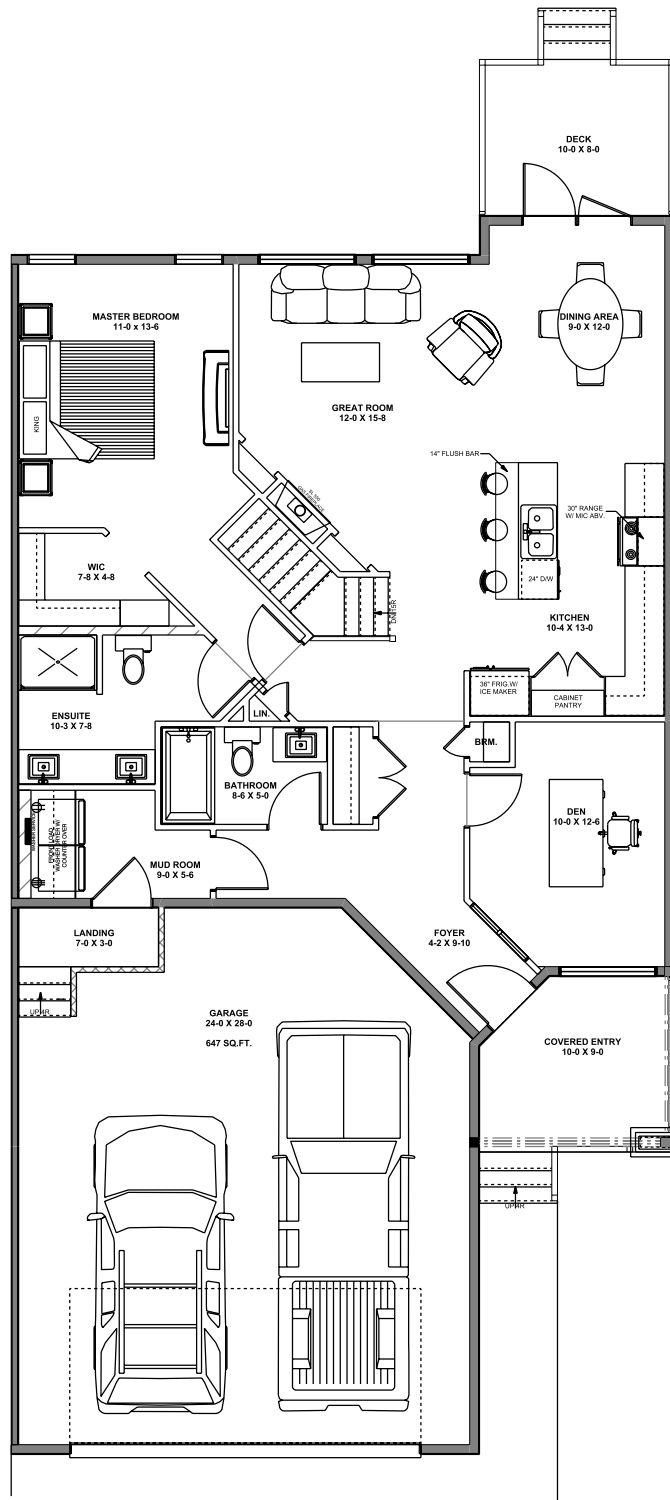


SITKA PLUS II | MAIN FLOOR 1226 Sq. Ft.

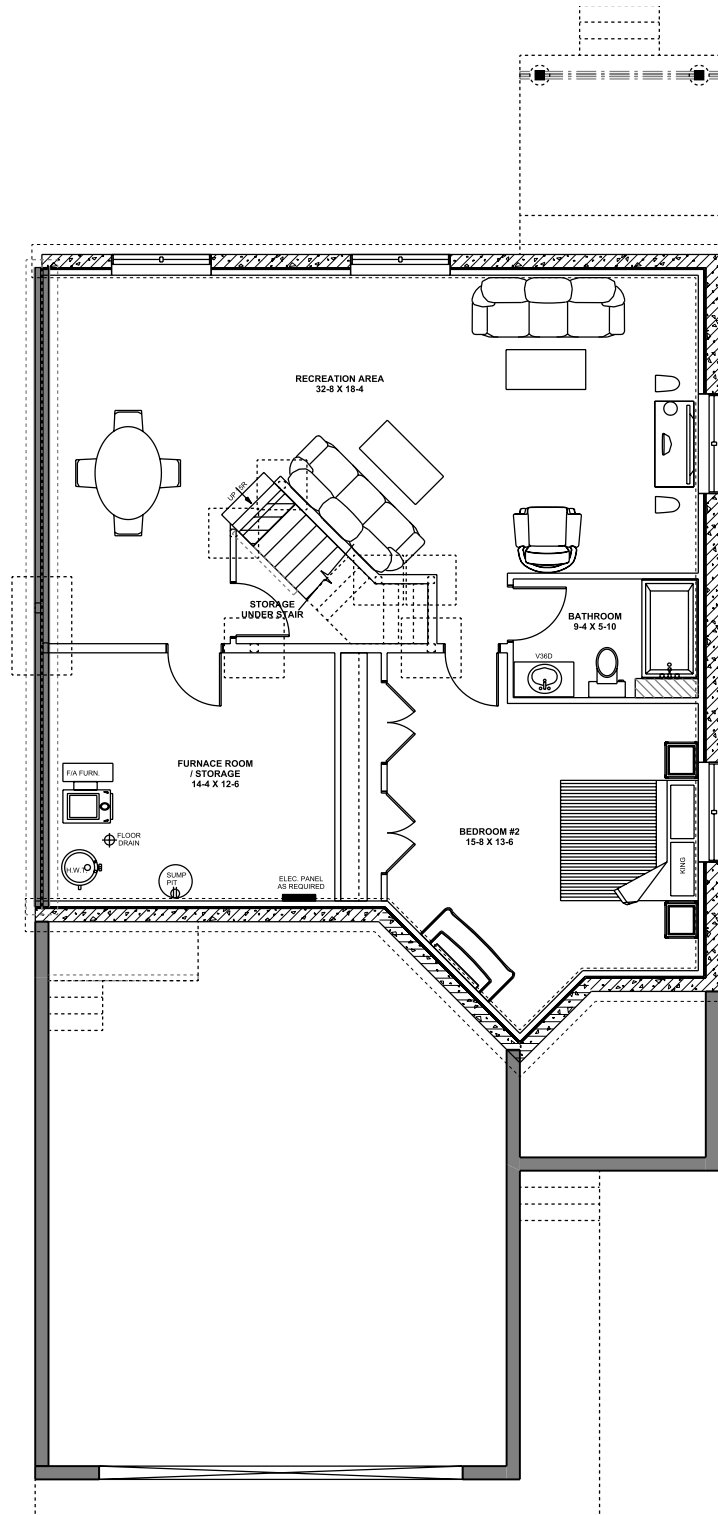


CENTENNIAL
ESTATES

Office: 780.962.8778 | #98, 1005 Calahoo Road Spruce Grove, AB T7X 2T7 | mycentennialestates.com

*Any use of reproduction in whole or in part is strictly prohibited. Floorplans, specifications and dimensions shown are approximate and are subject to change without notice.

SITKA PLUS II | BASEMENT 1206 Sq. Ft.



CENTENNIAL
ESTATES

Office: 780.962.8778 | #98, 1005 Calahoo Road Spruce Grove, AB T7X 2T7 | mycentennialstates.com

*Any use of reproduction in whole or in part is strictly prohibited. Floorplans, specifications and dimensions shown are approximate and are subject to change without notice.