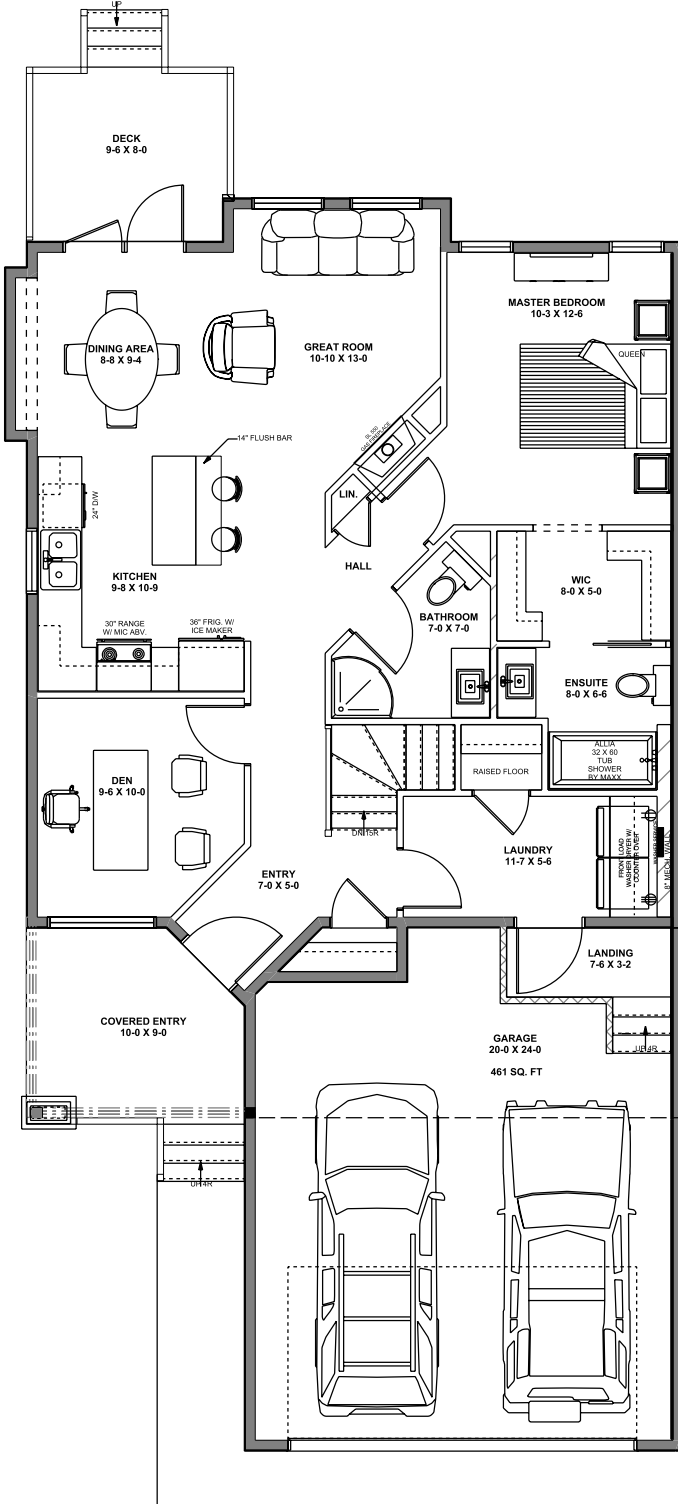


**NORWAY** | MAIN FLOOR 1000 Sq. Ft.

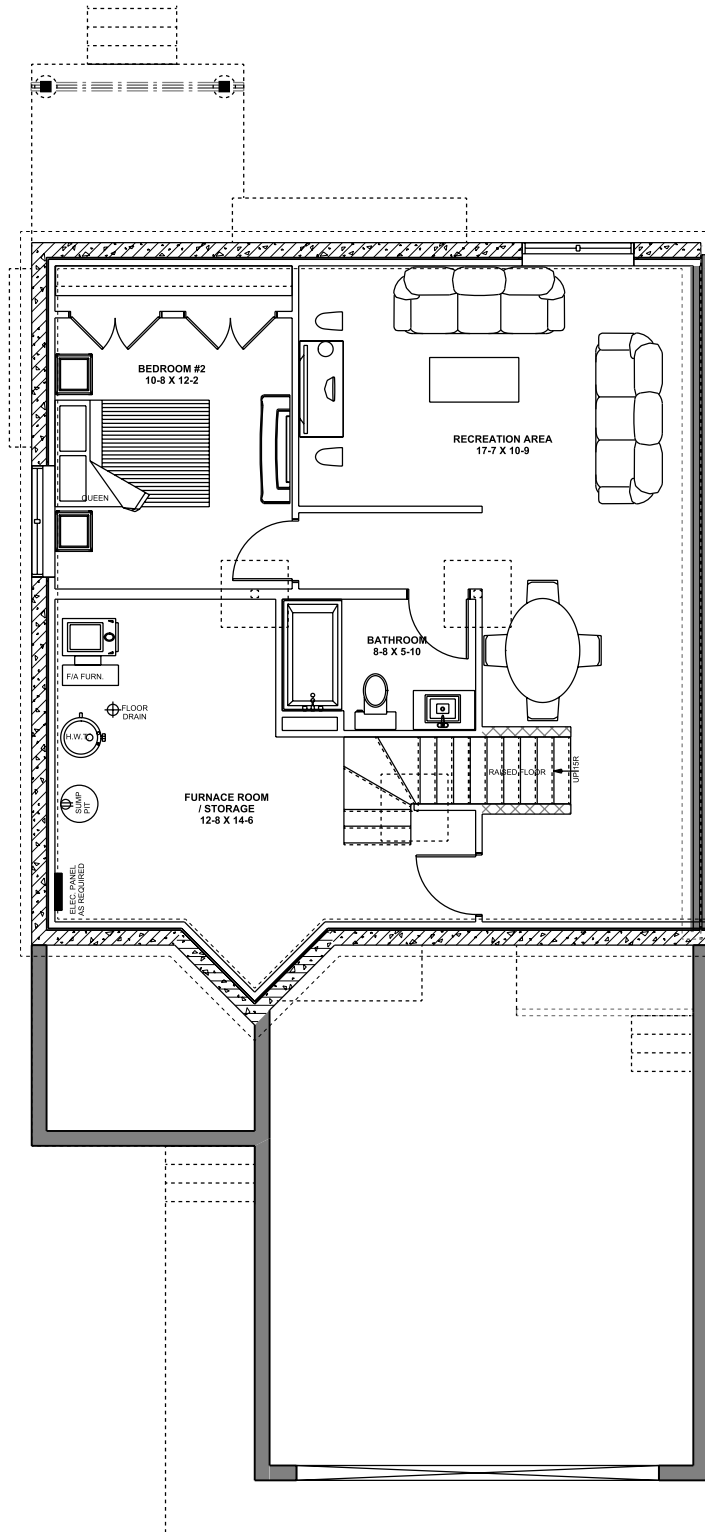


CENTENNIAL  
ESTATES

Office: 780.962.8778 | #98, 1005 Calahoo Road Spruce Grove, AB T7X 2T7 | [mycentennialstates.com](http://mycentennialstates.com)

\*Any use of reproduction in whole or in part is strictly prohibited. Floorplans, specifications and dimensions shown are approximate and are subject to change without notice.

# NORWAY | BASEMENT 958 Sq. Ft.



CENTENNIAL  
ESTATES

Office: 780.962.8778 | #98, 1005 Calahoo Road Spruce Grove, AB T7X 2T7 | [mycentennialstates.com](http://mycentennialstates.com)

\*Any use of reproduction in whole or in part is strictly prohibited. Floorplans, specifications and dimensions shown are approximate and are subject to change without notice.